



ARCHER EXPERTS

ISN'T IT TIME YOU CALLED AN EXPERT?

Product Datasheet

Data feed management / monitoring can be challenging, especially when dozens or even hundreds of data feeds exist. As Archer administrators, the last thing you wish to experience is the business identifying issues with production data before you! The limited, out-of-the-box Archer feed status notifications send out all statuses including successful completions; potentially inundating the recipient with hundreds of emails, most of which require no attention and action.

Now with the Data Feed Monitoring / Analysis solution, there is no longer the need for Archer administrators to subscribe to ALL notifications sent out by data feeds. Through a graphical interface, they can quickly focus their attention on only those feeds which have encountered problems and have issued failure or warning messages. Administrators AND business owners can see their recent feed status in a dashboard filled with useful information. Issue / failures can be identified immediately avoiding any negative impacts to daily business operations.

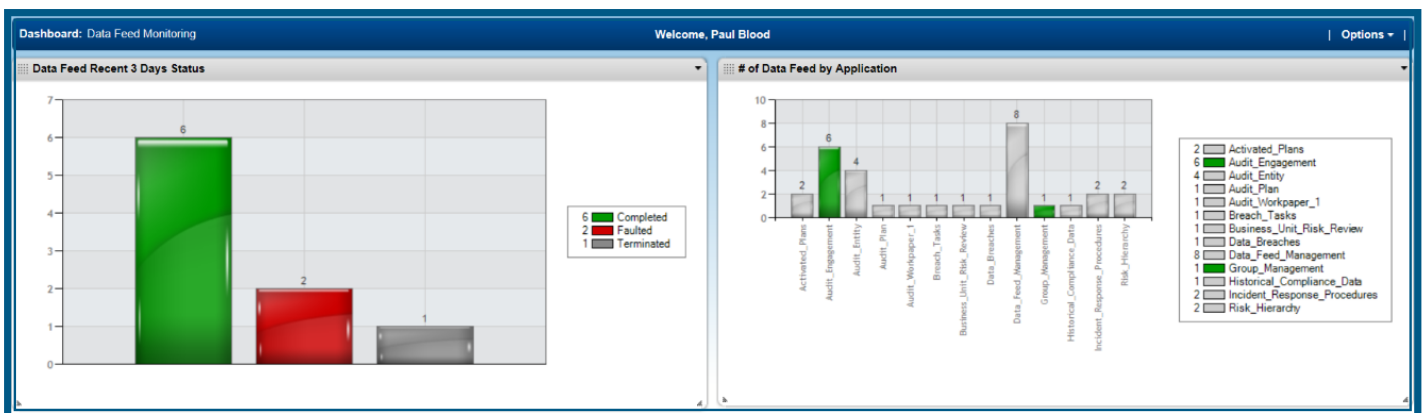
The Business can also analyze the feeds they are interested in through easy to read charts and proactively discover trends or potential issues.

Archer Experts Data Feed Management

Special points of interest:

- ◇ Quickly identify data feed problems before they negatively impact the business.
- ◇ Using a graphical interface, swiftly drill down to identify problems for quick remediation.
- ◇ Isolate problem areas without the distraction of unnecessary notifications.
- ◇ Analyze historical data feed performance to proactively address potential future problems.
- ◇ Empower Business Managers with the ability to acknowledge the information they are working with is both accurate and timely.

Dashboard View of Data Feed Management



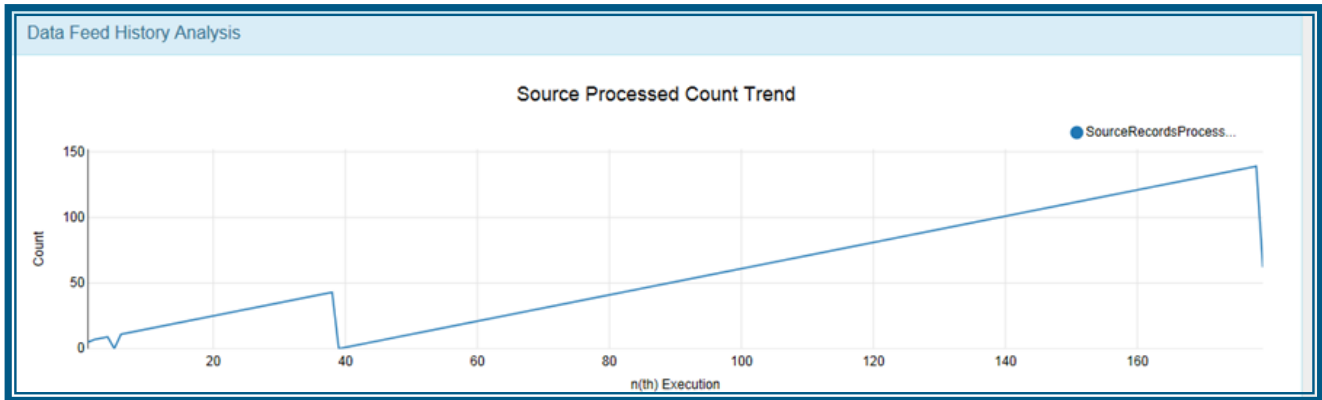


ARCHER EXPERTS

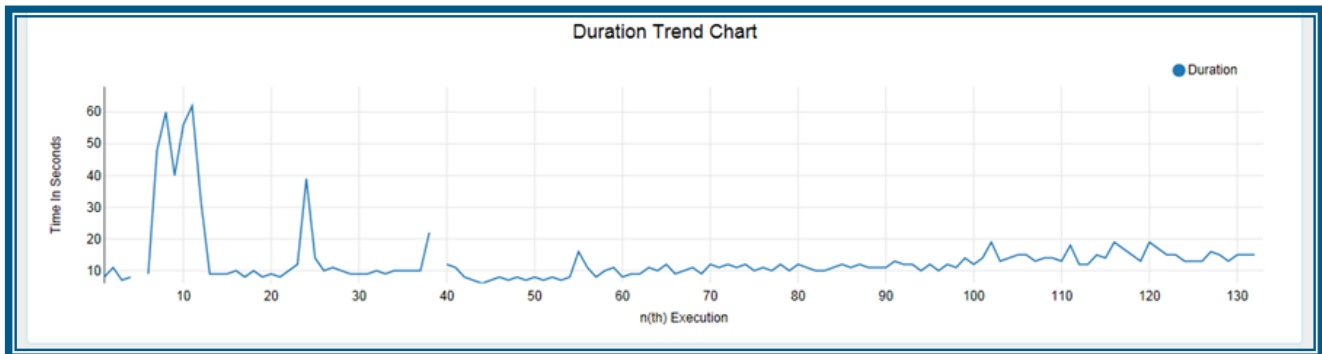
ISN'T IT TIME YOU CALLED AN EXPERT?

Product Datasheet Data Feed Management

Source Processed Trend Analysis Report



Duration Trend Analysis Report



FOR MORE INFORMATION OR TO SCHEDULE A FREE DEMONSTRATION CONTACT:

Paul Blood—VP of Business Operations

Email: PBlood@ArcherExperts.com

Phone: 877-871-0110